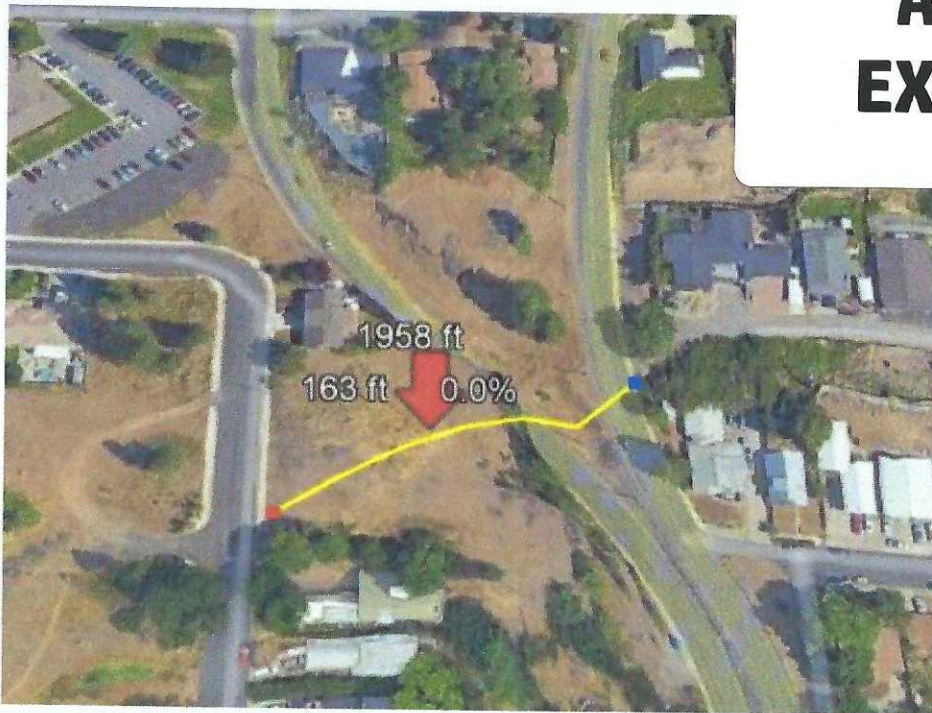


APPELLANT EXHIBIT 2



Elevation gain/loss: -42.4 ft (loss of 42.4 ft)

Red Point: Latitude 47.687648, Longitude -117.436309

Blue Point: 47.688269, Longitude: -117.435118



Loss of 37.9 ft.

Red Point: Latitude: 47.688102 Longitude -117.436323

Blue Point: 47.688269, Longitude: -117.435118

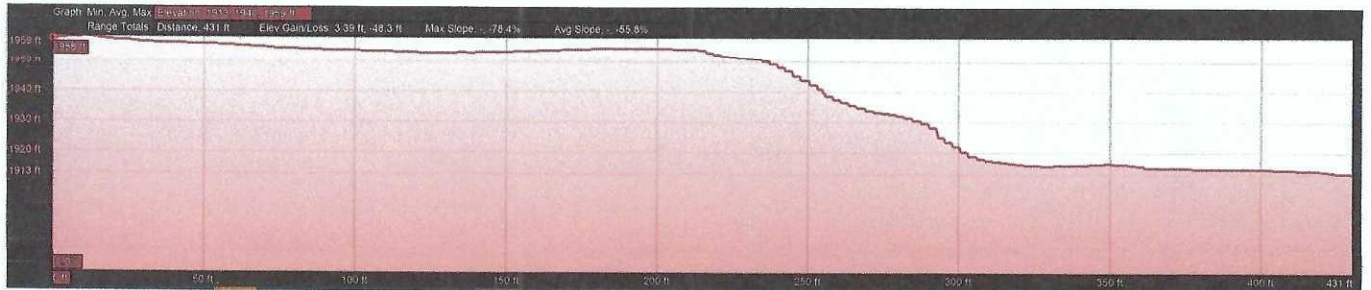
Figures were created in google earth



Latitude and Longitude

Red Point (arrow): Latitude 47.687648, Longitude -117.436309

Blue Point: Latitude 47.688686, Longitude -117.36090



Graph: Elevation Gain/Loss: -48.3 ft (loss of 48.3 ft)

